

# Historic, archived document

Do not assume content reflects current scientific knowledge, policies, or practices.



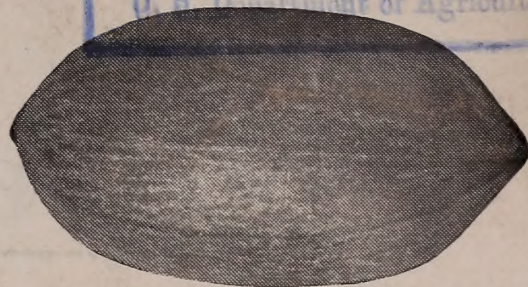


62,83

<1936>

LIBRARY  
RECEIVED

U. S. Department of Agriculture.



# ARP NURSERY COMPANY

P. O. Box 867 TYLER, TEXAS Formerly of Arp, Texas

Pecans

Peaches

Plums

Pears

Apples

Grapes

Roses

Figs

Catalog No. 51





Over 30 Years Nursery Experience

# Note Change

## ARP NURSERY COMPANY

P. O. BOX 867

**TYLER, TEXAS**

(Formerly of Arp, Texas)



**O**UR nurseries and offices have both been located at Arp, Texas, for many years. This season we have moved our office to Tyler, Texas, which enables us to give our customers better and more prompt service in distributing our **BETTER ROOTED TREES**. In the future, please mail all orders and communications to—



# Arp Nursery Company

P. O. Box 867

**TYLER, TEXAS**

**Arp Grown Trees Are Best**

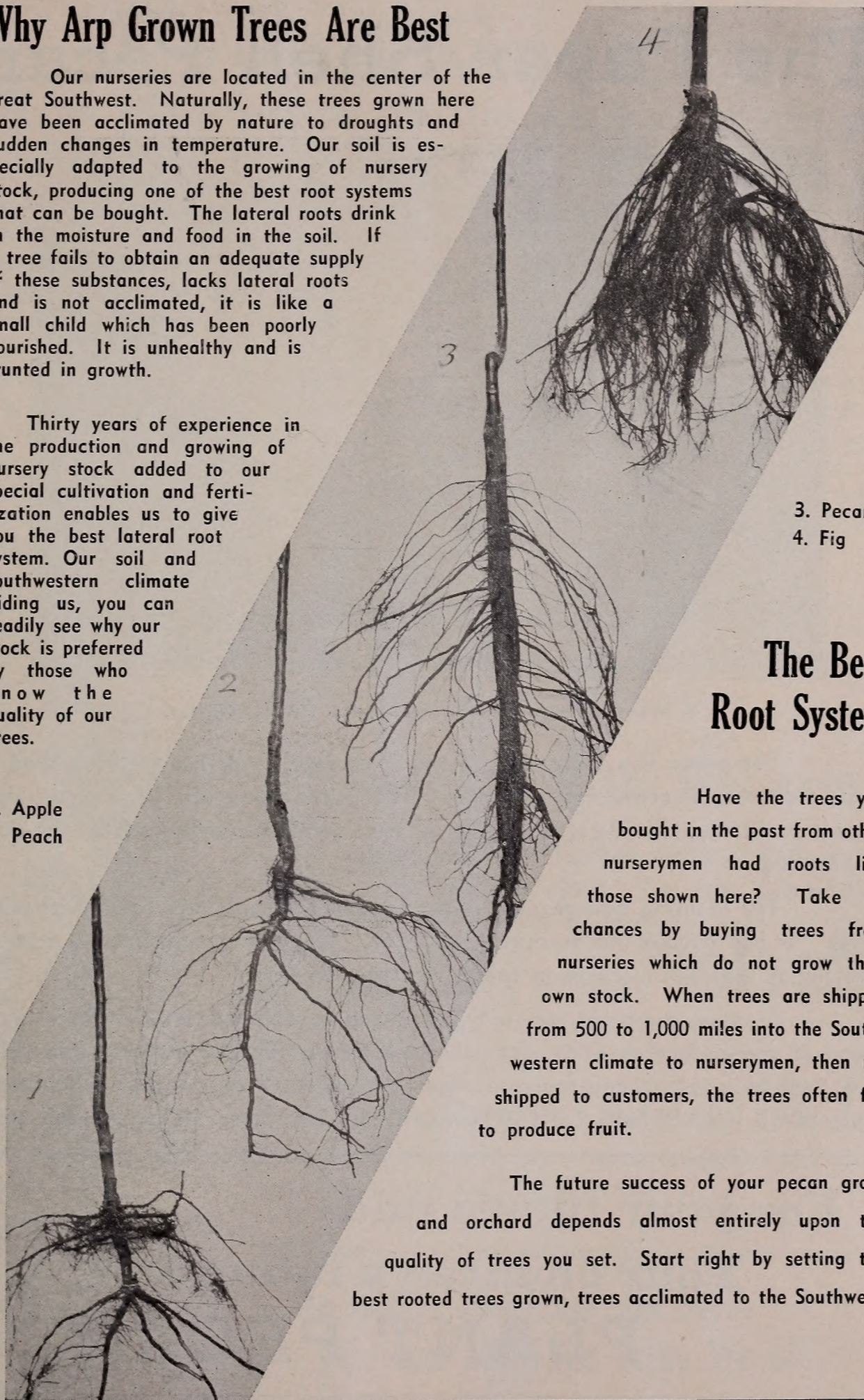


## Why Arp Grown Trees Are Best

Our nurseries are located in the center of the great Southwest. Naturally, these trees grown here have been acclimated by nature to droughts and sudden changes in temperature. Our soil is especially adapted to the growing of nursery stock, producing one of the best root systems that can be bought. The lateral roots drink in the moisture and food in the soil. If a tree fails to obtain an adequate supply of these substances, lacks lateral roots and is not acclimated, it is like a small child which has been poorly nourished. It is unhealthy and is stunted in growth.

Thirty years of experience in the production and growing of nursery stock added to our special cultivation and fertilization enables us to give you the best lateral root system. Our soil and Southwestern climate aiding us, you can readily see why our stock is preferred by those who know the quality of our trees.

1. Apple
2. Peach



3. Pecan
4. Fig

## The Best Root System

Have the trees you bought in the past from other nurserymen had roots like those shown here? Take no chances by buying trees from nurseries which do not grow their own stock. When trees are shipped from 500 to 1,000 miles into the Southwestern climate to nurserymen, then re-shipped to customers, the trees often fail to produce fruit.

The future success of your pecan grove and orchard depends almost entirely upon the quality of trees you set. Start right by setting the best rooted trees grown, trees acclimated to the Southwest.



The Home of Better Rooted Trees

# The Paper Shell Pecan



A WELL CARED FOR PAPER SHELL PECAN GROVE

The pecan is a native tree of the Southwest. Trees two to three hundred years old are still producing big crops. The South alone can grow paper shell pecans profitably, showing a production of fruit within a few years from the date of planting.

The planting and growing of paper shell pecans is now as safe as other crops. It has passed the experimental stage. Planting pecan trees is now an investment that will increase in value from year to year.

A pecan grove set now will enable you to welcome your future with no dread of dependence on others for your sustenance. Besides increasing in value from year to year, a pecan grove set now will **PAY YOU AND YOUR CHILDREN AND YOUR CHILDREN'S CHILDREN** yearly dividends from its paper shell nuts.

For your future and  
Your children's future—  
**PLANT PECANS**



Arp Nursery Company, Tyler, Texas

# Pecan Groves

## With planted-in fruits and row crops

If you are located in a fruit section, plant peaches, plums, figs, or any other fruit suitable for your location, between the rows of pecans. The fruit trees will develop normally and will not interfere with the growing of the pecan trees for ten to twelve years. Pecans are set at a good distance, fifty to sixty feet, which they will require in later years. If the ground is set in fruits, you can grow cotton and other farm crops first, second and third years after setting trees. After that time, however, the pecan and fruit trees will take up practically all the ground. At the age of three to four years, the peaches and plums will begin bearing, yielding good crops for six to ten years before the pecans will be large enough to require the space occupied by fruit trees. Your pecans will begin producing in paying quantities eight to ten years from date of planting, with its income increasing from year to year thereafter. If your land and location is not suitable for fruits you can grow row crops for years with a good yield from your pecan investment.

Below: A 4-ft. tree from our nursery. These trees live, grow and produce.



This method of setting fruit trees between the pecans has been proved by some of our largest growers of pecan groves to be one of the best methods of planting and making the grove pay its own way.

## Success With Pecans

Success or failure depends almost entirely on the quality of the tree you plant. The root system of a young pecan tree gathers up the plant food and moisture from mother earth. A tree without a good supply of lateral roots and a reasonable amount of tap root gets no food supply, no moisture, and naturally makes a poor growth. It will barely live, produce few nuts, be unprofitable—in fact, a complete failure. With a good lateral root system, a reasonable amount of tap root and properly set, a pecan grove will produce big crops, meaning success and wealth to you.

**We GROW The Trees We SELL  
and SELL The Trees We GROW**



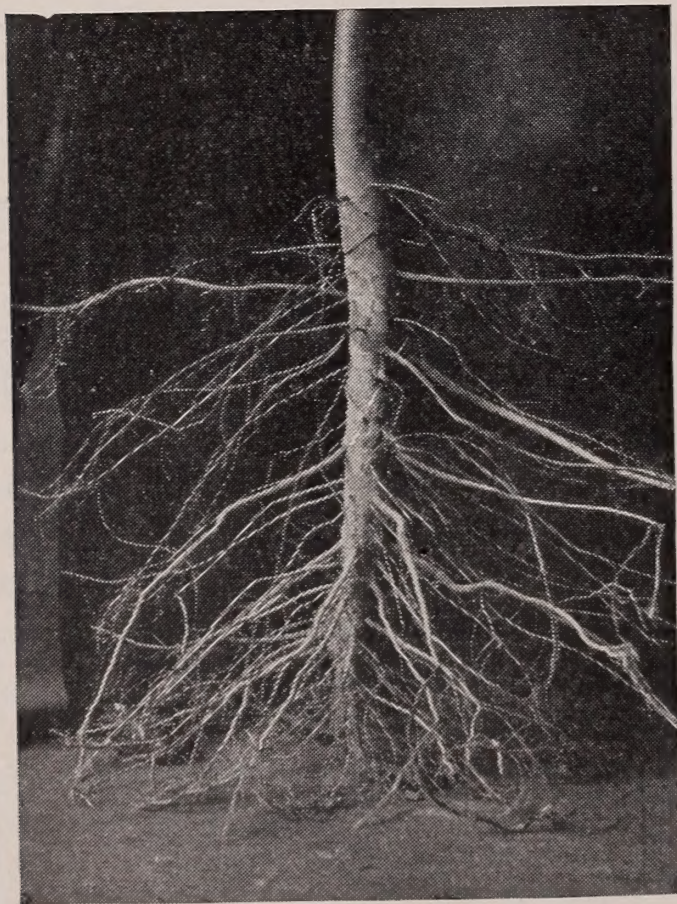
Over 30 Years Nursery Experience

## Pecan Soils

Most of the land in the Southwest will grow pecans profitably. Practically all bottom land, unless too wet or sour, is ideal; hilly land where water is found between ten and thirty-five feet is excellent. Plant pecans on land that will grow cotton and corn, for, like other crops, pecans will grow fastest where the land is strongest. In all our experience we have found that only stiff clay or thin soil with a hard pan near the surface will make a pecan grove unprofitable.

## Size of Trees

In our opinion, a thrifty, well rooted tree is the first consideration in setting pecan trees. The size of the well-rooted tree is governed by its age. A well-rooted tree three to five feet, usually has a two or three year old root system with a one year graft or bud growth. Trees well-rooted five to eight feet usually have a three to four year old root system with one or two year graft or bud growth. Trees well-rooted eight feet up, usually have a four to five year old root system with two or three year graft or bud growth. We have found that trees from three to ten feet, with a good lateral root system and a reasonable amount of tap root, are being transplanted with the best success. Therefore we do not recommend a certain size, but we do suggest when selecting sizes that you take into consideration that the larger and older trees will begin bearing earlier than the smaller ones.



SHOWING THE ROOT SYSTEM OF ONE OF OUR 2½ YEAR OLD PECAN TREES

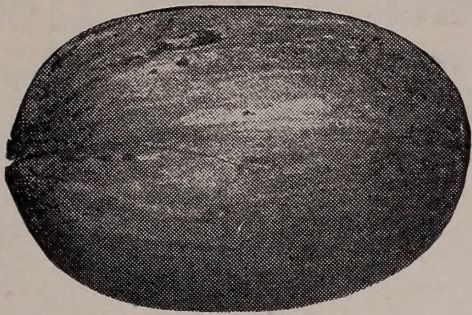
## Varieties

In planting commercial orchards, two to five varieties should be used. Varieties selected should be governed by your location. For East Texas, Louisiana, Arkansas and Eastern Oklahoma, we advise planting Stuart, Success, Schley, Delmas, Money Maker and Burkett; for Central Texas and Western Oklahoma, Stuart, Success, Schley, Delmas, Burkett, Halbert and Texas Prolific; for Coastal sections, Stuart, Success, Money Maker; for West Texas and New Mexico, Halbert, Burkett, Texas Prolific, with a small per cent of Success, Schley, Delmas and Stuart.



# The Home of Better Rooted Trees

## EASTERN VARIETIES



**STUART**

The Stuart is the leading pecan, being suited to more sections of the country than any other variety. The nuts are large to very large, usually well filled, medium to heavy bearers.



**DELMAS**

Nuts large, shell moderately thin, kernel plump, heavy bearer. Tree is vigorous with beautiful foliage.



**SUCCESS**

The Success is a first class pecan. Nuts are large to medium, thin shell cracks well. The kernel is plump and heavy, excellent flavor; strong growing tree, early bearer.



**SCHLEY**

Very thin shell nut, large, plump kernel, fine flavor; rapidly growing tree. Nuts sell for highest market price, but not quite so prolific as some of the other varieties. However, the Schley is an ideal pecan, and its quality makes up for its shy bearing.

## WESTERN VARIETIES



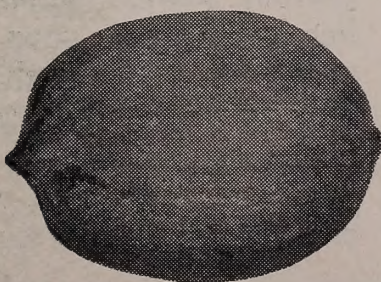
**BURKETT**

One of the favorites of West Texas, trees very healthy and regular bearers, medium size nuts, well filled and good flavor.



**TEXAS PROLIFIC**

Nuts large, shell of medium thickness, kernel plump, rich and sweet. It is a heavy and early producer; trees healthy and fast growers.



**HALBERT**

One of the most prolific of all varieties, very early bearer, medium size nut, very thin shell, excellent flavor. Young trees are willowy in appearance but become straight as they grow older. Nuts ripen early.



**Arp Nursery Company, Tyler, Texas**

# PRICE LIST of Paper Shell Pecan Trees

(F. O. B. OUR SHIPPING POINT)

## VARIETIES

Stuart, Success, Delmas, Schley, Money Maker, Burkett, Texas Prolific, Halbert

SIZE OF TREES	PRICE EACH	10 To 49 TREES	50 To 99 TREES	100 To 499 TREES
2 to 3 feet.....	.65	.55	.50	.40
3 to 4 feet.....	.70	.60	.55	.45
4 to 5 feet.....	.80	.70	.60	.50
5 to 6 feet.....	\$1.00	.90	.80	.60
6 to 7 feet.....	\$1.25	\$1.10	\$1.00	.75
7 to 8 feet.....	\$1.50	\$1.35	\$1.25	\$1.00
8 to 10 feet.....	\$2.00	\$1.75	\$1.50	\$1.25

For quantities of 500 or more trees, write us for special prices, giving varieties and sizes wanted



SHOWING OUR VIGOROUS AND HEALTHY PECAN STOCK AS IT LOOKS IN THE NURSERY ROW.

## Our Guarantee

We guarantee our trees to be just as represented and our root system to equal that of any nursery in the world. If upon receipt of trees, you do not find them to be as represented, return them and we will gladly furnish satisfactory trees or refund the purchase price. We do everything in our power to keep our stock pure and true to name. However, we realize that errors are possible. In the event that any nursery stock should prove untrue to name, and purchaser should thereby sustain damages, we hereby agree, upon proper proof, to replace such stock as may prove untrue to name under which it is sold, or to refund purchase price, refunding or replacing to be at our option.



Arp Grown Trees Are Always Better



# Fruits

## PEACHES

### May Varieties

**MAYFLOWER**—(Semi-Cling)—White with red cheek, one of the best early peaches, good shipper. Ripens first of May.

**VICTOR**—(Semi-Cling)—Well known variety, ripens first of May.

**EARLY WHEELER**—(Semi-Cling)—Cream with red cheeks, large and handsome, extra fine for commercial purposes. Ripens last of May.

### June Varieties

**ARP BEAUTY**—(Semi-Cling)—Yellow with bright blush, highly flavored, ripens first of June.

**LATE ARP BEAUTY**—(Semi-Cling)—Large yellow with beautiful red cheek, brings fancy prices on the market, one of the best home and commercial peaches. Ripens about June 15th.

**MAMIE ROSS**—(Semi-Cling)—Large, white with red cheek, one of the best varieties. Ripens 10th to 15th of June.

**CARMAN**—(Semi-Cling)—Large, white with deep blush, skin tough, juicy, brings good price on market. Ripens 15th of June.

**HILEY**—(Freestone)—Good size, well colored with red, best of quality, a good shipper and prolific bearer.

**SLAPPY**—(Freestone)—Yellow, delicious flavor, a fine peach. Ripens 20th of June.

## Special Fruit Tree Offer No. 1

F. O. B. Our Shipping Point

All Trees Four to Five Feet High

For \$17.50 and ten names and addresses of your neighbors (land owners), who would likely be interested in trees, we will ship you the following list of trees:

**PEACHES**—5 Mayflower, 5 Arp Beauty, 5 Mamie Ross, 15 Elberta, 5 Chinese Cling, 5 Lemon Cling, 5 Stenson October, 5 Red Indian.

**PLUMS**—3 Six Weeks, 3 Burbank, 3 America, 3 Gold.

**FIGS**—3 Celestial, 2 Magnolia.

**GRAPES**—4 Concord, 4 Niagra, 4 Delaware, 4 Carman.

**APRICOTS**—2 Apricots.

A total of 85 trees which are worth \$24.70 at our catalog prices; all to you for ten names and addresses and \$17.50.



# The Home of Better Rooted Trees

## July Varieties

- ELBERTA**—(Freestone)—The old, well known variety, Ripens July 5th to 10th.
- BELL OF GEORGIA**—Very large, white with red cheek, an all around peach, firm. Ripens 15th of July.
- CHINESE CLING**—(Cling)—A well known variety, juicy and sweet.
- J. H. HALE**—(Freestone)—Fruit large, deep golden, excellent flavor. One of the best varieties. Ripens 20th of July.
- EVERBEARING**—(Freestone)—This peach ripens in three crops; first in July, last crop about September 1st, Indian type; first crop large, second smaller, and third still a size smaller, a very sweet peach, every one should set a few trees of this variety in their home orchard.

## August Varieties

- AUGBERTA**—(Freestone)—Like the Elberta in size, looks and flavor. A good market peach. Ripens 5th to 10th of August.
- MIXON CLING**—(Cling)—Large, yellowish white with red cheeks, delicious flavor, a beauty. Ripens first of August.
- LEMON CLING**—(Cling)—Large, oblong, yellow with red cheeks, flesh yellow.
- HEATH CLING**—(Cling)—Large, creamy white, flesh firm, ripens last of August.
- HENRIETTA**—(Cling)—Large, yellow, flesh firm, ripens last of August.
- RED INDIAN**—(Cling)—Red flesh, the old time Indian peach, ripens in August.
- YELLOW INDIAN**—(Cling)—Yellow flesh, fine flavor, good for home orchard, ripens in August.

## October Varieties

- STENSON OCTOBER**—(Cling)—White, a well known variety.

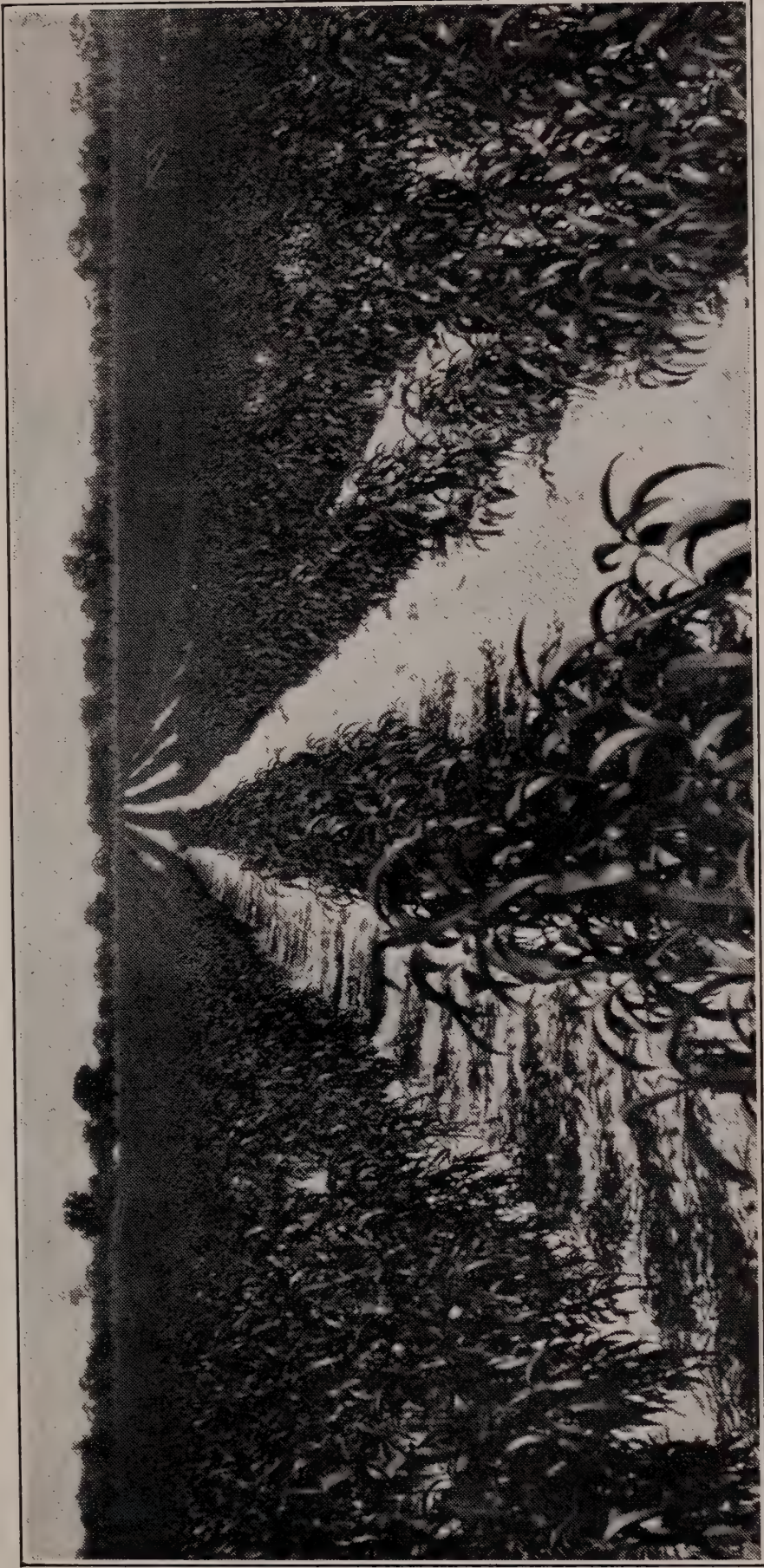
## Prices of Peach Trees

F. O. B. Our Shipping Point

SIZES OF TREES	Price Each	Price Each	Price Each
	Lots of 1 to 25	Lots of 25 to 100	Lots of 100 to 500
18 to 24 Inches.....	.15	.12½	.10
2 to 3 Feet.....	.20	.15	.12½
3 to 4 Feet.....	.25	.17½	.15
4 to 5 Feet.....	.35	.25	.20
5 to 7 Feet (2-Years).....	.40	.30	

If interested in larger quantities for commercial planting, write us for special prices, giving varieties and number of trees wanted.

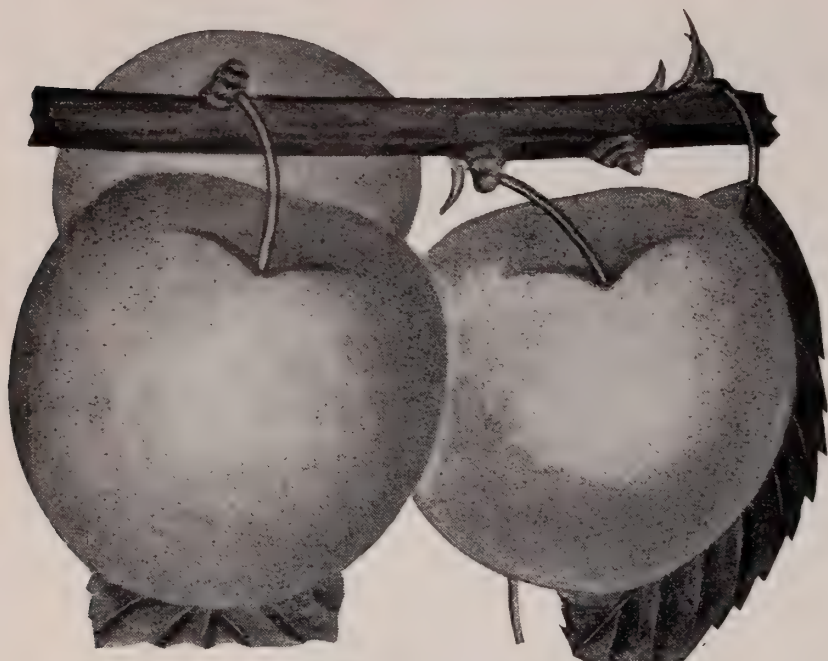




A View of our Peach Stock as it Looks in Nursery



# Over 30 Years Nursery Experience



**AMERICA PLUM**

**AMERICA**—Large, yellow with red cheek, tree fast grower, a fine commercial plum

**BURBANK**—An old variety, fruit red dotted with yellow, a good bearer.

**BOTAN OR ABUNDANCE**—Flesh yellow, a good shipper, and an abundant bearer.

## AUGUST VARIETIES

**WICKSON**—Fruit very large, an old variety, very popular.

## SEPTEMBER VARIETIES

**GOLDEN BEAUTY**—Golden when ripe, a very heavy bearer, good for preserves and jelly.

# PLUMS

## MAY VARIETIES

**SIX WEEKS**—Large, yellow with red, a profitable plum.

## JUNE VARIETIES

**COMPASS CHERRY**—Cross between the cherry and plum, fruit medium size, color reddish yellow.

**BRUCE**—Ripens early, firm for shipping, large, delicious flavor, good bearer.

## JULY VARIETIES

**GOLD**—Large, yellow with red cheek, a good bearer and one of the best.

## Prices on Plums

(F. O. B. Our Shipping Point)

SIZE OF TREES	Price Each		Price Each	
	Lots of 1 to 25		Lots of 25 to 100	
18 to 24 Inches.....	.20	.17½	.15	
2 to 3 feet.....	.25	.20	.17½	
3 to 4 feet.....	.30	.22½	.20	
4 to 5 feet.....	.40	.30	.25	
5 to 7 feet (2-year).....	.50	.40		

Our best advertisers are the thousands of satisfied PATRONS we have throughout Texas and adjoining states. Our GRADES, SERVICE and ROOT SYSTEM bring us new and repeated orders from communities where our varieties and superior products are known.



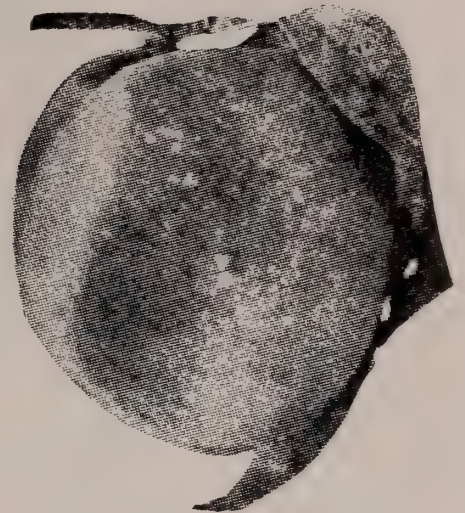
# APRICOTS

## VARIETIES

**EARLY GOLDEN**—Medium size, yellow, freestone, rich and juicy.

**CLUSTER**—Medium, golden yellow, delicious flavor, good bearer.

**MOORPARK**—Large, yellow with green flesh, bright orange, separates readily from the seed.



**MOORPARK APRICOT**

## Prices of Apricots

(F. O. B. Our Shipping Point)

2 to 3 feet—25c each;      3 to 4 feet—35c each;      4 to 5 feet—50c each

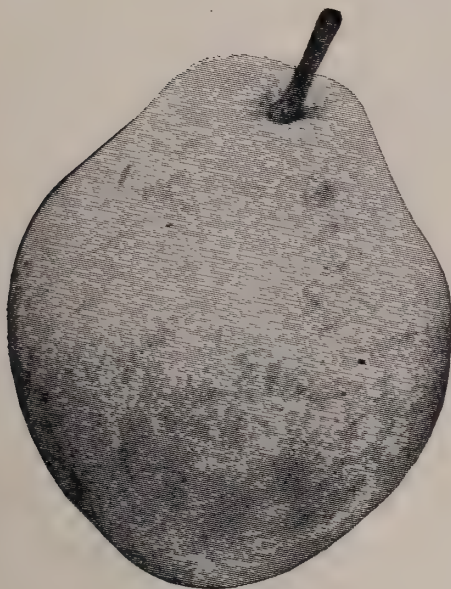
# PEARS

## VARIETIES

**BARTLETT**—Fruit yellow, juicy, delicious flavor, a very popular variety; successful in West Texas and in most sections; ripens July to August.

**GARBER**—Fruit large, yellow in color with red cheeks, a good keeper, choice variety for the South; ripens in August.

**KEFFER**—A well known pear; fruit very large, grown successfully in all sections; trees resist blight, very vigorous, immensely productive; ripens in September.



**KEFFER PEAR**

## Prices of Pears

(F. O. B. Our Shipping Point)

SIZE OF TREES	Price Each	Price Each	Price Each
	Lots of 1 to 9	Lots of 10 to 99	Lots of 100 & Up
3 to 4 feet.....	.35	.30	.25
4 to 5 feet.....	.45	.40	.35



# APPLES

## Varieties

**RED JUNE**—One of the best early apples, red, flesh white and crispy, a good table and market apple.

**YELLOW TRANSPARENT**—Fruit large, yellow, good quality, tree very hardy and bears young, ripens in June.

**JONATHAN**—Fruit brilliant red, delicious flavor, one of the surest bearers, tree hardy, a splendid variety for home orchard. Ripens in September.

**MAMMOTH BLACK TWIG**—Fruit yellow shaded with red, a good bearer and trees very hardy. Ripens September to November.

**WINE SAP**—An old variety, well known, one of the best of keepers, good for home and commercial orchard. Ripens from September to October.

**ARKANSAS BLACK**—Fruit dark red, medium size, excellent flavor, ripens in October.

**DELICIOUS**—Fruit large, dark red, flesh crisp and melting, juicy, highest quality, now taking first place for commercial and home orchards. Ripens in the late fall.



**DELICIOUS APPLE**

## Prices of Apples

(F. O. B. Our Shipping Point)

SIZE OF TREES	Price Each	Price Each	Price Each
	Lots of 1 to 9	Lots of 10 to 99	Lots of 100 & Up
3 to 4 feet.....	.35	.30	.25
4 to 5 feet.....	.45	.40	.35

## FIGS

**MAGNOLIA**—Fruit large, pale violet, flavor excellent; bears on one year stem. The leader for commercial orchards in the Coast Belt Section.

**CELESTIAL**—Fruit medium size, delicious flavor, a good bearer; one of the best varieties for Texas (North of Coast Section), Oklahoma, Arkansas and similar climates.

**BROWN TURKEY**—Oblong, Red flesh, dark brown, delicious, prolific.

## Prices of Figs

(F. O. B. Our Shipping Point)

SIZE OF TREES	Price Each	Price Each	Price Each
	Lots of 1 to 9	Lots of 10 to 99	Lots of 100 & Up
2 to 3 feet.....	.35	.25	.20
3 to 4 feet.....	.50	.35	.25
4 to 5 feet.....	.60	.45	.35



# Grapes

## Varieties



CONCORD GRAPE

**MOORE'S EARLY**—Fruit large, black, has good flavor, fine market grape, good for home planting; vine vigorous; ripens in June.

**NIAGARA**—Fruit large, greenish white, large cluster, good quality, successful in nearly all sections; ripens first of July.

**CONCORD**—Fruit large, black, the best known of all varieties, one of the best for home or market; ripens in July.

**CARMAN**—Vine very thrifty, does well on any kind of soil, grapes large, compact cluster, a fine eating grape, one of the best varieties; ripens about August 10th.

**DELAWARE**—Fruit small, compact cluster, juicy with a sweet delicious flavor, standard variety for table and market use; ripens last of August.

## Prices of Grapes

(F. O. B. Our Shipping Point)

	Each	Lots of 12 to 24	Lots of 25 to 100
1 Year Plants (well rooted and branched).....	.20	.15	.12
2 Year Plants (well rooted and branched).....	.25	.20	.15

# Japanese Persimmons

## VARIETIES

**TANI-NASHI**—The best known and most popular variety in general. Fruit large, early bearer, early ripener and productive.

**OKAMI**—Fruit good flavor, color red when ripe, a good keeper, bears heavily in clusters; practically seedless.

## Prices of Japanese Persimmons

(F. O. B. Our Shipping Point)

SIZE OF TREES	Price Each	Price Each Lots of 10
3 to 4 feet.....	.70	.60
4 to 5 feet.....	.80	.70



# Arp Nursery Company, Tyler, Texas



A WELL KEPT BERRY PATCH

## STRAWBERRIES

**IMPROVED LADY THOMPSON**—This is one of the favorites of many growers; early, a delicious flavor, good color and a good shipper, can't be beat for home use, and finds ready sale on the market.

**IMPROVED KLONDIKE**—The old reliable, medium early, blood red, firm. One of the best for all around purposes that can be bought.

## BLACKBERRIES

**McDONALD**—Medium size, firm, good shipper, plant other berries near it to pollenize. It is early; ripens with Austin Dewberry.

**LAWTON**—Vigorous grower, one of the leaders for commercial planting in East Texas.

## DEWBERRIES

**AUSTIN**—We have found this berry by far the best of all varieties for this section, therefore, we offer only this variety. It is very large, much larger than our wild dewberries, blooms late; ripens a little later than the native dewberry.

## PRICES OF BERRIES

(F. O. B. Our Shipping Point)

**STRAWBERRIES**—Lots of 25—50c; Lots of 100—\$1.00; Lots of 500—\$3.00; Lots of 1,000—\$5.00

**BLACKBERRIES**—Dozen—\$1.00; Lots of 100—\$6.00; Lots of 1,000—\$20.00

**DEWBERRIES**—Dozen—75c; Lots of 100—\$4.00; Lots of 1,000—\$12.00

## HEDGE PLANTS

There is nothing that will improve the looks of your home as much as a well kept hedge set in the background or on a drive or walkway. The cost is small. Hedge plants should be set 12 to 24 Inches

### VARIETY

**AMOUR RIVER PRIVET (South)**—Most popular and best hedge for the Southwest. Beautiful evergreen, dense in growth, dark green, very compact, establishes a good hedge in one year. Beautiful and permits shearing to any height or shape.

## PRICES OF HEDGE PLANTS

(F. O. B. Our Shipping Point)

SIZE OF PLANTS	Price Each	Price Each	Price Each
	Lots of 10 to 24	Lots of 25 to 99	Lots of 100 & Up
18 to 24 inches.....	.06	.05	.04
2 to 3 feet.....	.07	.06	.05
3 to 4 feet.....	.08	.07	.06
4 to 5 feet.....	.10	.09	.08



Over 30 Years Nursery Experience

# ROSES

## Their Beauty and Value

A house becomes a home only by having lovely and congenial people within the frame and by having attractive and beautiful surroundings. Our nursery will furnish you the surroundings to complete your home.

Roses are shrubs that produce their value in blooms. Throughout the Southwest, roses will bloom practically every month of the year, enabling you to keep cut flowers in your home as well as blooming bushes in your yard and garden. A home increases in value as beauty is added to the surroundings. No flower or shrub will add as much value in proportion to cost as our budded and better rooted roses.

Plant your yard and garden with colorful roses and add value to your property.

## Varieties

### BUSH ROSES—(Red)

**RED RADIANCE**—Very much like pink radiance except that blooms are a beautiful red color; both bud and blossom are beautifully formed. Bush very vigorous.

**PAUL NEYRON**—A very large, double, light red rose; can often be cut with 3 foot stems; very few side branches. Almost no thorns; a free bloomer.

**J. L. MOCK**—Flower extra large, varying from bright red from the outside of the petals to silver white inside, a good autumn bloomer.

**AMERICAN BEAUTY**—Popular because of its fragrance, large crimson buds. Free bloomer with healthy stock.

**JOHN RUSSELL**—Bears large and deep red blooms. Vigorous flower.

**FRANCES SCOTT KEY**—Good bloomer, extra large and compact blooms, light crimson, erect and heavy foliage bushes.

**HOLLYWOOD** — Dark red, lasting buds of oblong shape, very fragrant.

**RED AMERICAN BEAUTY** — Large, bears freely on strong stems, very popular.



**PINK RADIANCE**



# The Home of Better Rooted Roses



KAISERIN AUGUSTA VICTORIA

## BUSH ROSES (Red) Continued

**E. G. HILL**—Beautiful dark red buds, blooms are full to the center compact, last long time on bush or cut, one of the leaders.

**ETOILE DE HOLLAND**—Brilliant red bloom, attractive free bloomer, one of the best.

**AME QUENARD**—Crimson, large flowers, a good bloomer throughout the summer months, vigorous plants.

**PATIENCE**—Bright red buds with a deep orange shading at the base of the petals, bush a fair grower.

## BUSH ROSES—(Pink)

**PINK RADIANCE**—Light silver pink; free bloomer, one of the best plants, upright and vigorous.

**COLUMBIA**—A very beautiful pink, free bloomer all through the season, plants very hardy.

**DAME EDITH HELEN**—One of the best truly pink roses on the market, huge buds, shapely, erect stems, fragrant blossom.

**PINK COCHET**—Beautiful blooms, perfect buds, strong plant, constant bloomer.

**WILLOWMERE**—Yellow center shading to pink petals, constant bloomer, ready grower.

**MRS. CHARLES BELL**—Lovely shell pink (often called Shell Pink Radiance), beautiful buds, bush strong and healthy.

**DAINTY BESS**—Charming single flowers in large clusters of soft mauve-pink with petals of kidlike texture emphasized by a garnet crimson center, a tall growing plant.

*For Investment,*

*Beauty and Pleasure—*



*Plant Roses*



# Arp Grown Trees Are Always Better

## BUSH ROSES—(Yellow)

**LUXEMBURG**—Yellow, proving to be one of the best. Long stems, pointed buds. Excellent cut flowers. Upright grower.

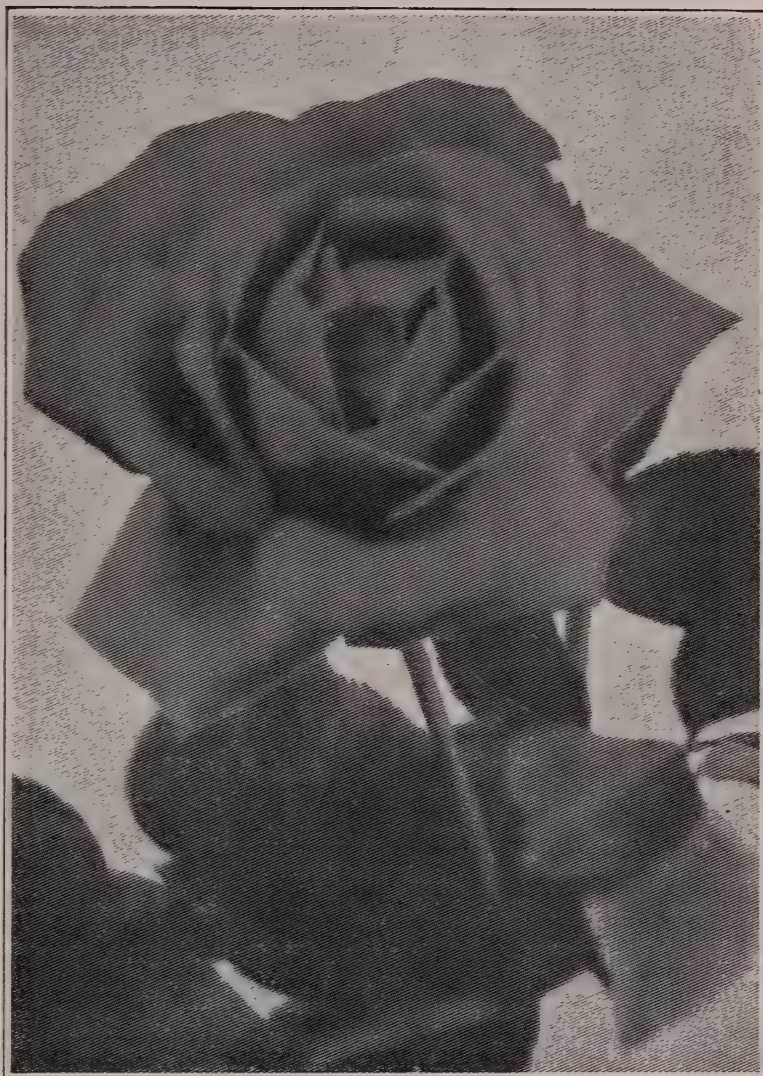
**LADY HILLINGDON**—Deep apricot yellow to orange, long pointed buds; a very free flowering variety and a striking decorative rose, sturdy, spreading growth.

**SUNBURST**—Deep golden, almost orange-yellow. Wonderful color and free bloomer.

**HOOVER**—Yellow blending to orange blooms. Buds well formed, petals large and thick, free bloomer.

**PADRE**—Good bloomer, slender plant, scarlet blending to orange and yellow.

**MRS. LOVELL SWISHER**—Salmon pink flushed with gold blooms, one of the largest and strongest growers, large pointed buds.



JOHN RUSSELL

**TALISMAN**—Colorful salmon and golden buds of exquisite shape. Blooms constantly and will produce in most places.

**ROSLYN**—Charming, pointed buds of golden yellow, a remarkable free bloomer.

## Special Rose Offer No. 1

25 Bushes \$6.25

Select 5 each of any varieties listed in our catalog  
ALL FIRST CLASS, No. 1, TWO YEAR OLD BUSHES.  
F. O. B. Our Shipping Point.

## Special Rose Offer No. 2

100 Bushes \$20.00

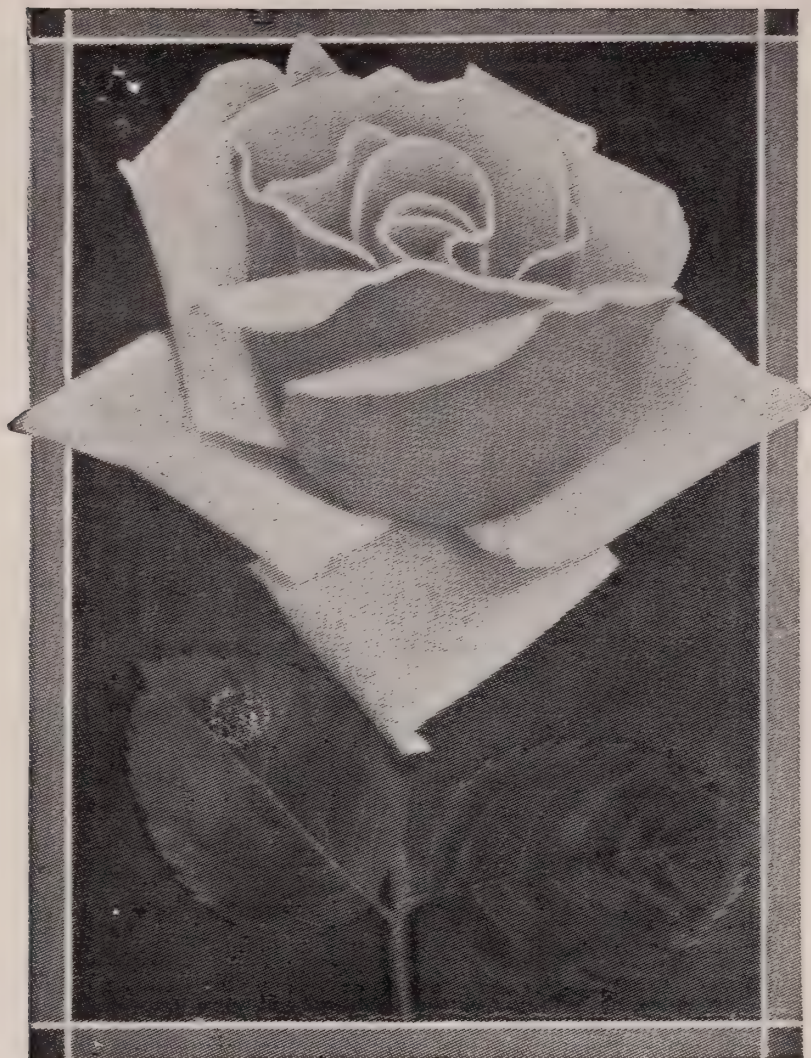
Select 25 Pink Radiance and 25 Red Radiance,  
the other fifty bushes to be selected as you desire.

We will give you first class No. 1 Bushes for \$20.00 or No. 1½ Bushes for \$15.00

ALL SHIPMENTS MUST BE MADE TO ONE ADDRESS

F. O. B. Our Shipping Point





**J. L. Mock**

**BUSH ROSES—White**

**KAISERIN AUGUSTA VICTORIA**  
—Pure white, large and double petals, one of the best white roses grown.

**WHITE AMERICAN BEAUTY—**  
Large buds and pure white flowers. Extra strong growth, long stems, fragrant.

**CALEDONIA** — Long, delicate, pure white buds, a very beautiful rose, bushes average growers.

**CLIMBING ROSES**

**PAUL'S SCARLET—**The brightest red rose grown, nearest to a pure scarlet, vivid flaming red; exceedingly strong, rank grower.

**KAISERIN AUGUSTA VICTORIA**  
—Pure white, vigorous, free bloomer, a good one.

**METEOR—**An old favorite, dark red blossoms, blooms all season.

**RED RADIANCE—**A strong climber, Buds and blooms like bush Red Radiance, a free bloomer.

**TALISMAN** — Yellow, vigorous bloomer, a very beautiful rose and a good one.

# Prices of Roses

(F. O. B. Our Shipping Point)

	Each	Per Dozen	Lots of 100 Each
Budded (2-Year Old Plants) No. 2.....	.25	2.00	.12½
Budded (2-Year Old Plants) No. 1½.....	.35	3.00	.17½
Budded (2-Year Old Plants) No. 1.....	.50	4.00	.25











## Planting and Pruning Trees

IF NOT READY to set when trees are received, unpack, set in a trench, cover roots well with mellow earth, and water thoroughly

**TO PLANT TREES:** Throw in, or take out, soil until the tree stands the same depth as it did in the nursery row. Then throw in soil. If dry, settle soil with bucket or more of water, mounding it up slightly, but do not pack. Then cut back top of tree 12 to 24 inches from the ground, according to size of tree.

**PECANS** should be set 2 to 3 inches deeper than they stood in the nursery row. Be sure to cut back top, but be careful to leave 3 to 4 "eyes" or buds above the point of the bud or graft, which can be easily determined by slight offset on the body of the tree.

**ROSES**—Trim off broken or bruised branches. Cut away all but four stems, leaving them about six inches long. Branches should be pruned 1-3 to 1-4 inch above the eye or bud. Set bushes in holes wider than the roots, setting the budded part of the plant just under the ground.

## Distance for Planting

Best distance for planting depends on the soil. If planting on rich soil, trees should be planted with more distance than when planting on thin soil. The following table shows the average distance your trees and plants should be set:

PECANS .....	40 to 60 FEET
PEARS .....	20 to 30 FEET
APPLES .....	20 to 30 FEET
PEACHES .....	18 to 25 FEET
PLUMS .....	15 to 20 FEET
FIGS .....	12 to 18 FEET
GRAPES .....	8 to 18 FEET
BLACKBERRIES .....	4 to 6 FEET
DEWBERRIES .....	4 to 6 FEET
STRAWBERRIES .....	1 to 4 FEET
ROSES .....	1½ to 3 FEET
CLIMBING ROSES.....	4 to 6 FEET

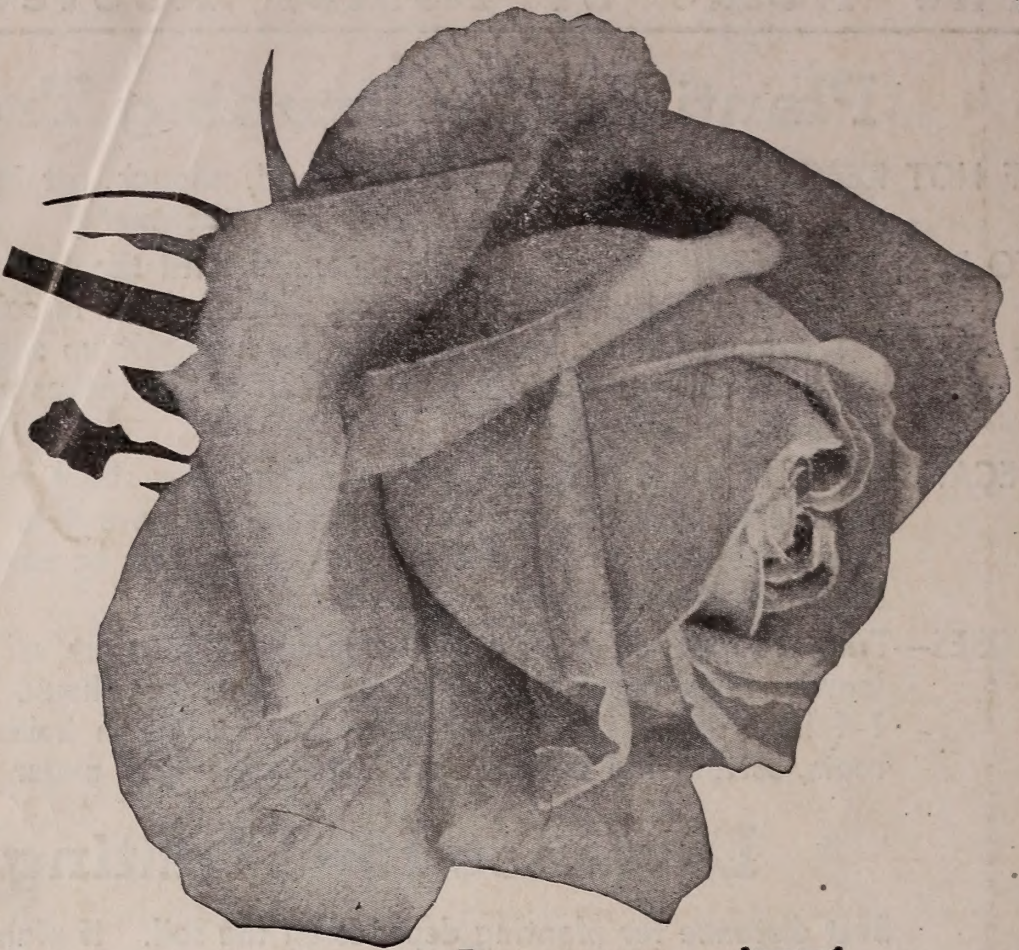
## To Ascertain Number of Trees to Set to the Acre

Multiply distance between tree rows by distance between the trees in the row. Then divide 43,560 by this product.

Example: Say your tree rows are 20 feet apart, and the trees in the row are 18 feet apart. Multiply 20 by 18; equals 360. Then, 43,560 divided by 360 equals 121, the number of trees required for an acre when set 20 by 18.

THE SHIPPING SEASON begins about November 1st, and continues on through April 1st, but it is better to transplant trees as early as possible after the leaves have shedded. A tree transplanted in the early fall will, by spring, have grown sufficient new roots to give it a quick growth as soon as active vegetation commences.





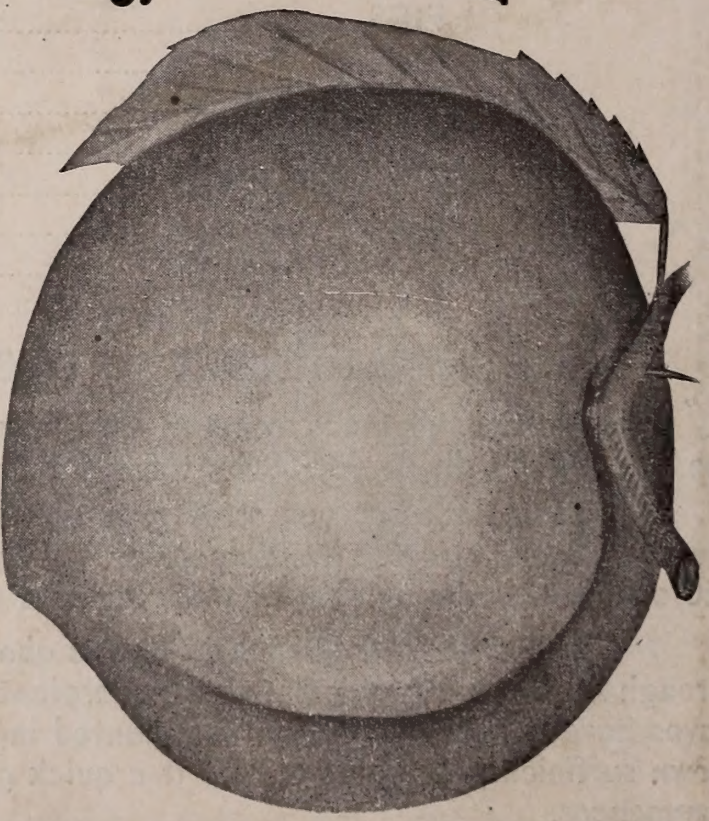
**Arp**

**Nursery**

**Company**

**P. O. Box 867**

**Tyler, Texas**



**Special Fruit Offer No. 2—\$10.00**

**TREES 2 TO 3 FEET HIGH. FIRST CLASS. PREPAID**

**PEACHES—10 Mayflower, 10 Arp Beauty, 10 Mamie Ross,  
10 Cling, 10 Augberta, 10 Early Elberta, 25 Elberta.**

**PLUMS—5 America, 5 Gold, 5 Six Weeks.**

**A TOTAL OF 100 TREES**

**Special Rose Offer No. 3—\$3.00**

**All Extra Large, 2-Year, No. 1 Bushes—Prepaid**

**Assorted in 4 colors: Red, Pink, White and Yellow**

**A TOTAL OF 12 BUSHES**